

Oilgear

HYDRAULIC MODULAR VALVE THROTTLE VALVE MT



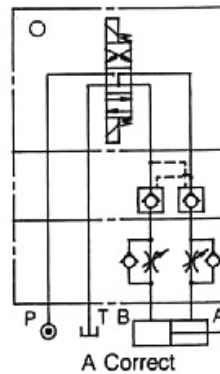
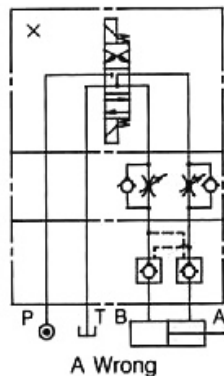
FEATURES

Modular type of pressure controls, flow controls, and check valves are sandwiched between directional control valves and their subplates or manifolds. They use no piping and share a common mounting surface, and are the ultimate in modern design, compactness and efficiency. They reduce the possibility of leakage, vibration, flow noise caused by piping. The compactness takes less space, ease the installation and maintenance.

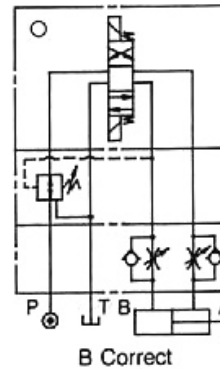
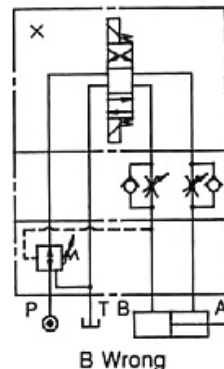
They are available in both D03 and D05 sizes.

CIRCUITRY EXAMPLES

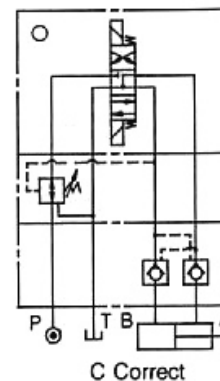
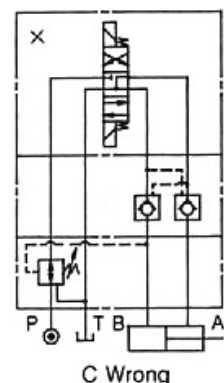
A.
Solenoid directional valve
Pilot operated modular
check valve (for A, B lines)
Modular reducing valve (for B
line)



B.
Solenoid directional valve
Modular flow control valve (for
A, B lines, metering out)
Modular reducing valve (for B
line)



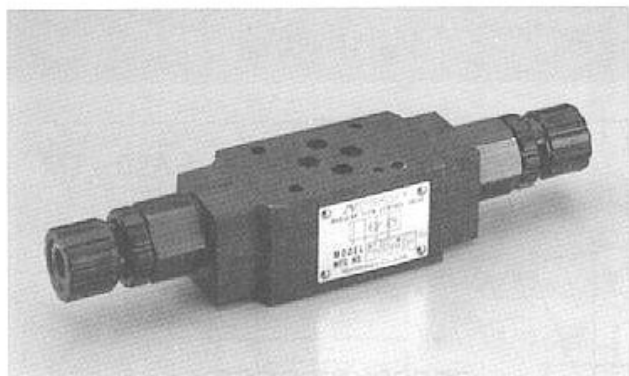
C.
Solenoid directional valve
Modular flow control valve (for
A, B lines, metering out)
Modular pilot operated check
valve (for A, B lines)



A.
When MT-***B and MPC-***W are used together in same circuit, the right circuit is correct usage, and left is wrong, as the MPC would not be totally closed.

B.
When MPR-***B and MT-***W are used together in same circuit, the right circuit is correct usage, and left is wrong, as the function of pressure reducing valve will be affected when oil flow from B to T. Because the metering out throttle/check valve will create a pressure which will cause pressure reducing valve to reduce the pressure too low, and the cylinder then can not operate with enough force or move smoothly.

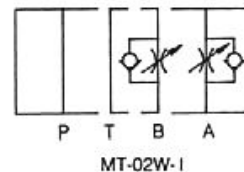
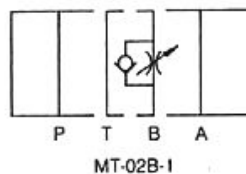
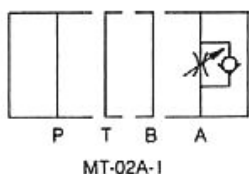
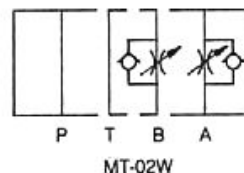
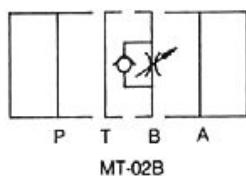
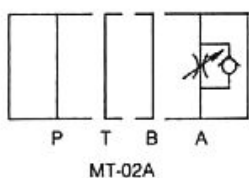
C.
When MT-***W and MPC-***W are used together in same circuit, the MT should be installed closer to the cylinder ports, otherwise cylinder may have a "knocking" phenomenon happened.



SPECIFICATIONS

Max. operating pressure	210 Kgf/cm ² (3000PSI)
Max. flow capacity	35 LPM (9.3 GPM)

SYMBOLS



HOW TO ORDER

MT - 02W - K - I - 30

DESIGN NUMBER

CONTROLLED MODEL :
I : METER IN
NO CODE : METER OUT

ADJUSTMENT MODEL :
K : WITH KNOB
NO CODE : WITHOUT KNOB

FUNCTION PORT :
A : A PORT
B : B PORT
W : A&B PORT

PORT SIZE : 1/4" (D03)

MODULAR THROTTLE AND CHECK VALVE

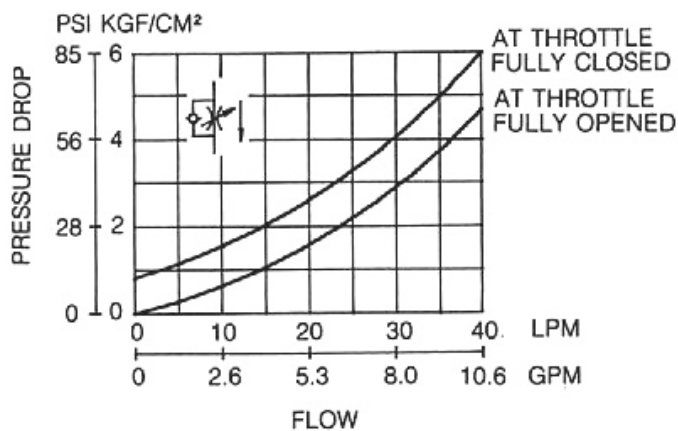
PERFORMANCE CURVES

TEST CONDITIONS

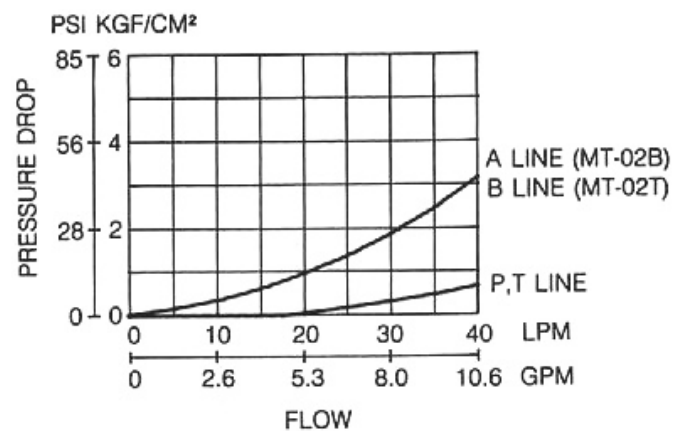
Viscosity: 35 CST

Temperature: 50°C

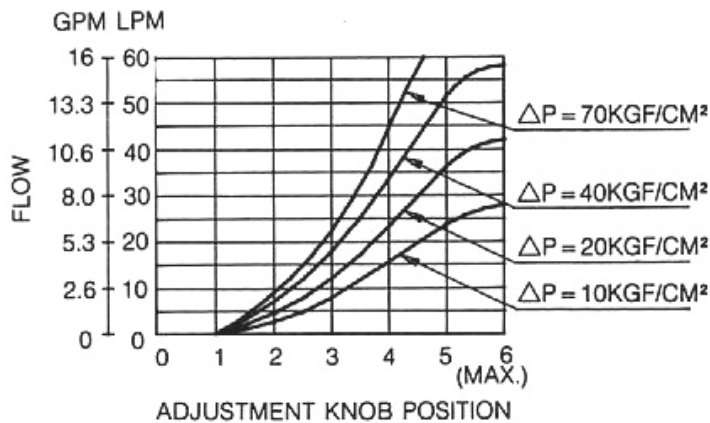
PRESSURE DROP FOR FREE FLOW



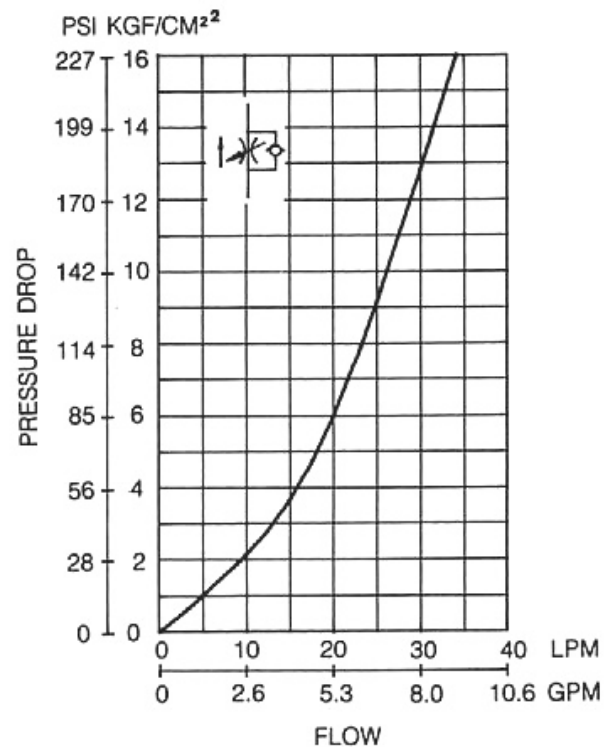
PRESSURE DROP



METERED FLOW VS. DIAL POSITION



PRESSURE DROP AT THROTTLE FULLY OPENED

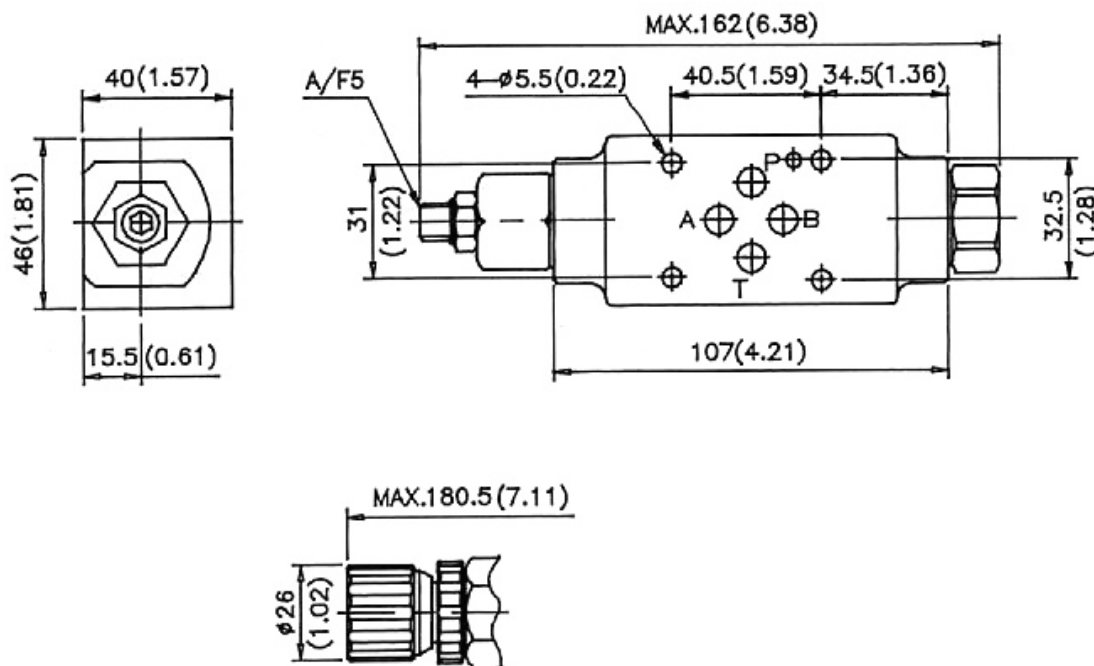


INSTALLATION DIMENSIONS

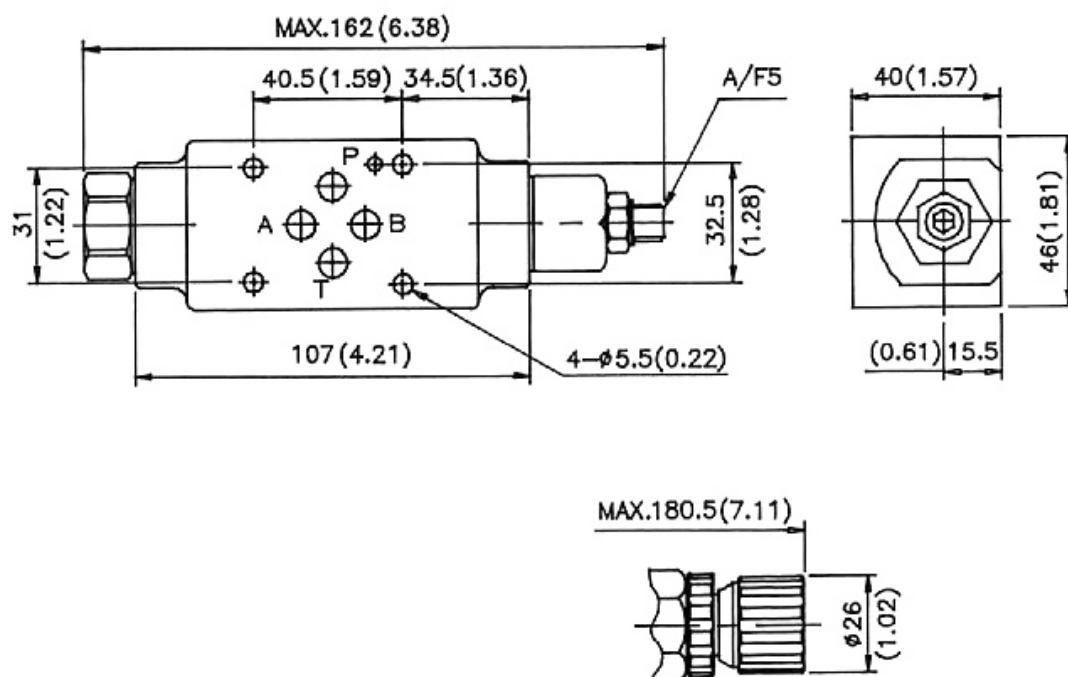
UNIT: mm(inch)

WEIGHT: 1.2 kgs (2.65 lbs)

MT-02A - * - 30



MT-02B - * - 30

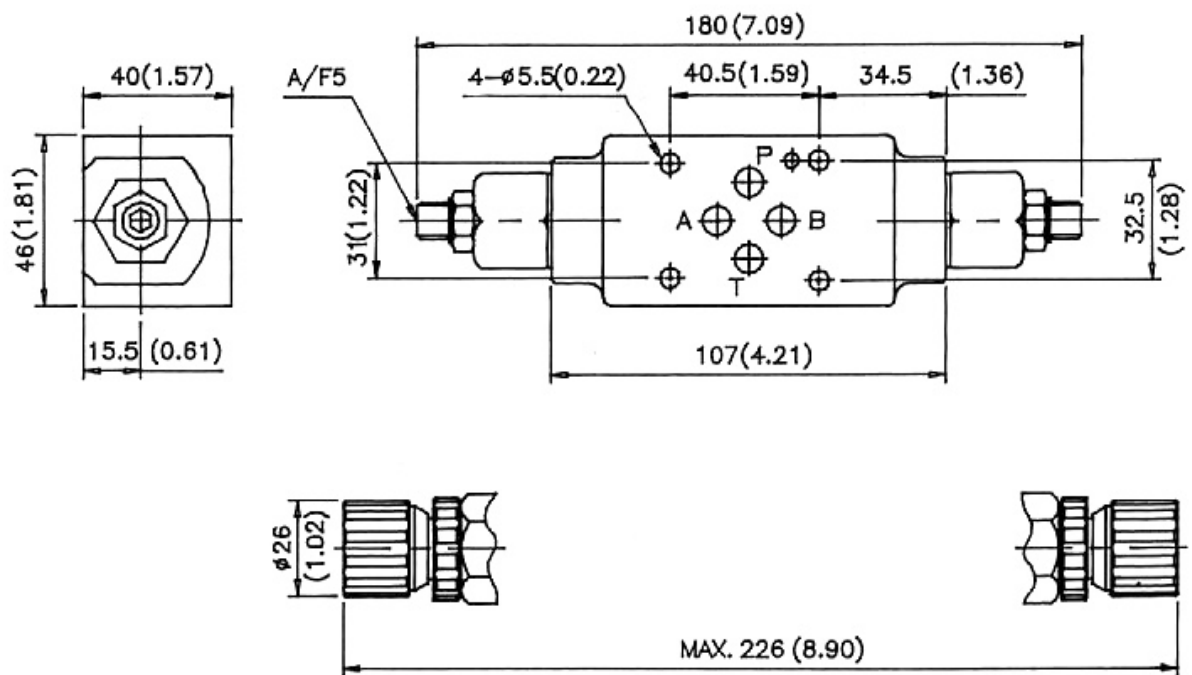


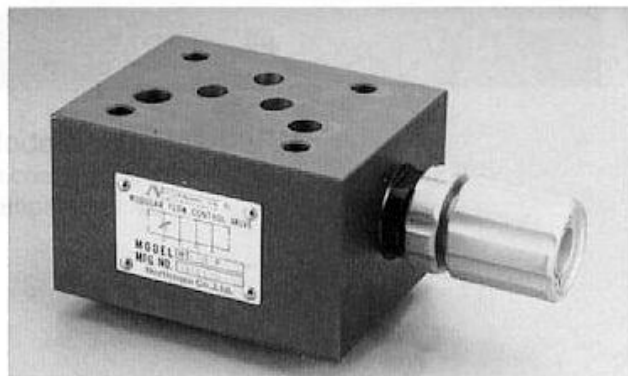
INSTALLATION DIMENSIONS

UNIT: mm(inch)

WEIGHT: 1.4 kgs (3.1 lbs)

MT-02W - * - * - 30





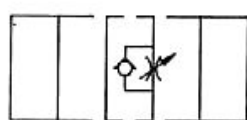
SPECIFICATIONS

Max. operating pressure	210 Kg/cm ² (3000PSI)
Max. flow capacity	70 LPM (20 GPM)

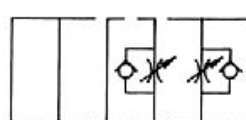
SYMBOLS



MT-03A



MT-03B



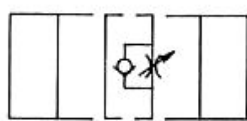
MT-03W



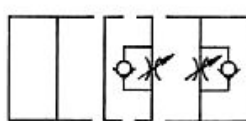
MT-03P



MT-03A-I



MT-03B-I



MT-03W-I



MT-03T

HOW TO ORDER

MT - 03W - K - I - 30

DESIGN NUMBER

CONTROLLED MODEL :
I : METER IN
NO CODE: METER OUT

ADJUSTMENT MODEL :
K : WITH KNOB
NO CODE: WITHOUT KNOB

FUNCTION PORT :
P : P PORT
T : T PORT
A : A PORT
B : B PORT
W : A&B PORT

PORT SIZE: 3/8" (D05)

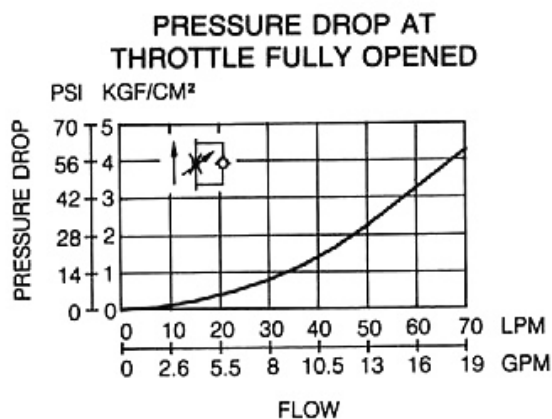
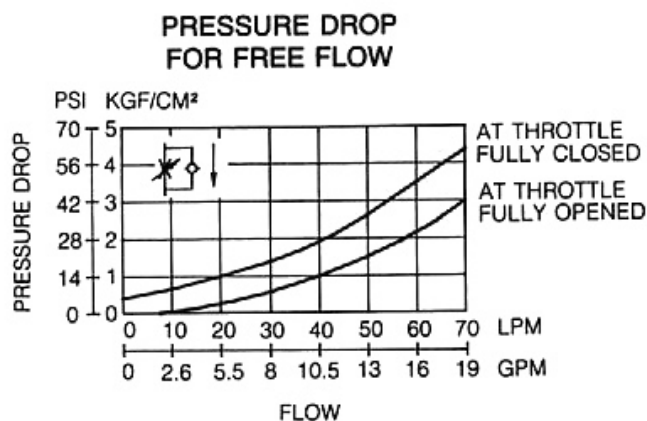
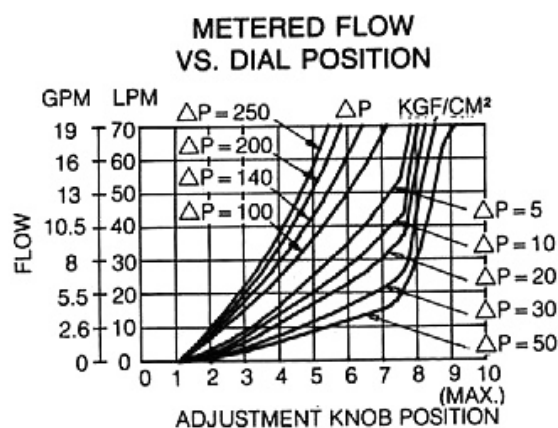
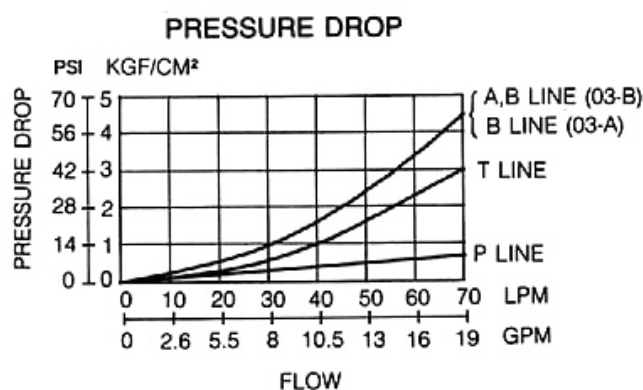
MODULAR PRESSURE REDUCING VALVE

PERFORMANCE CURVES

Models with MT-03W/A/B

Viscosity: 35 CST

Temperature: 50°C

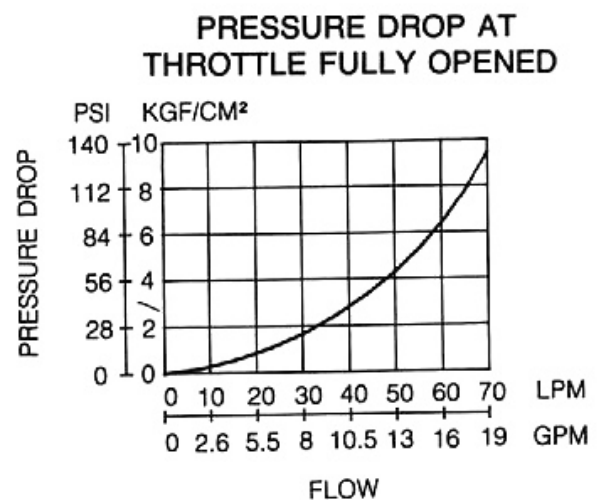
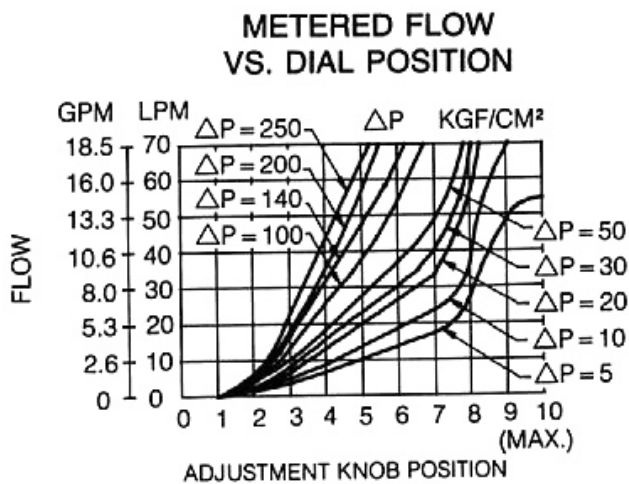
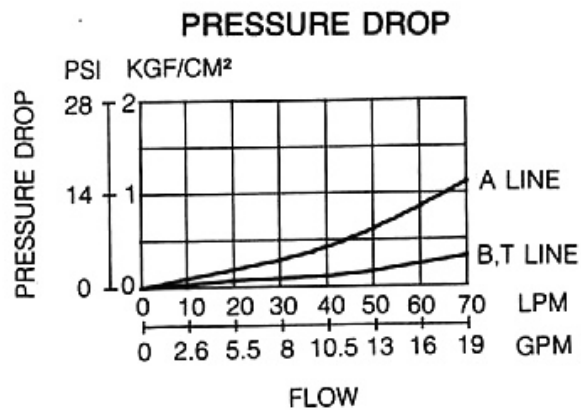


PERFORMANCE CURVES

Models with MT-03P/T

Viscosity: 35 CST

Temperature: 50°C

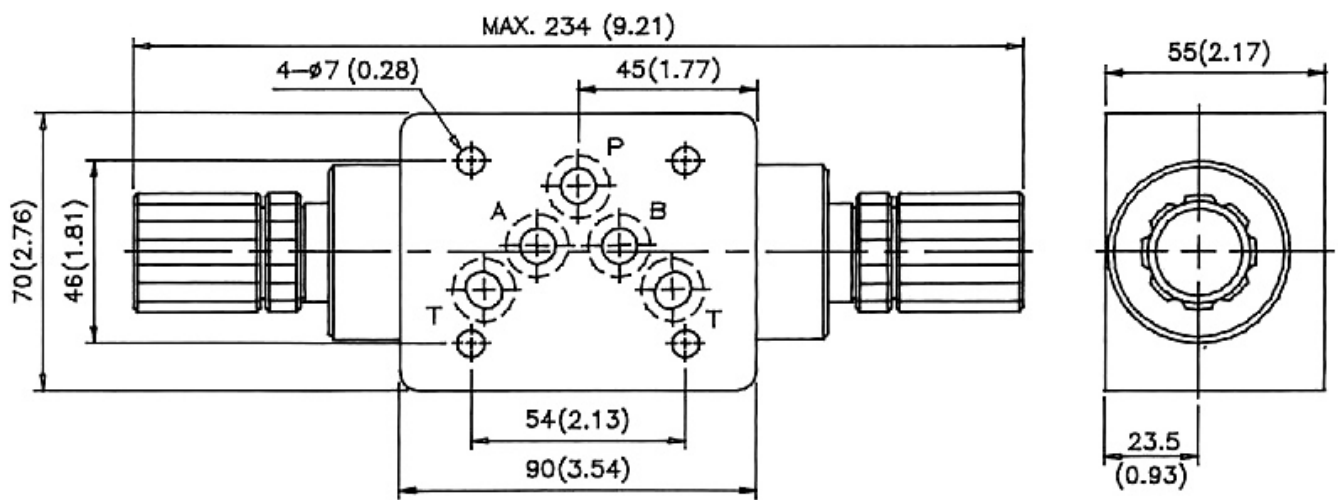


INSTALLATION DIMENSIONS

UNIT: mm(inch)

WEIGHT: 2.8kgs(6.171lbs)

MT-03W-**-**-30

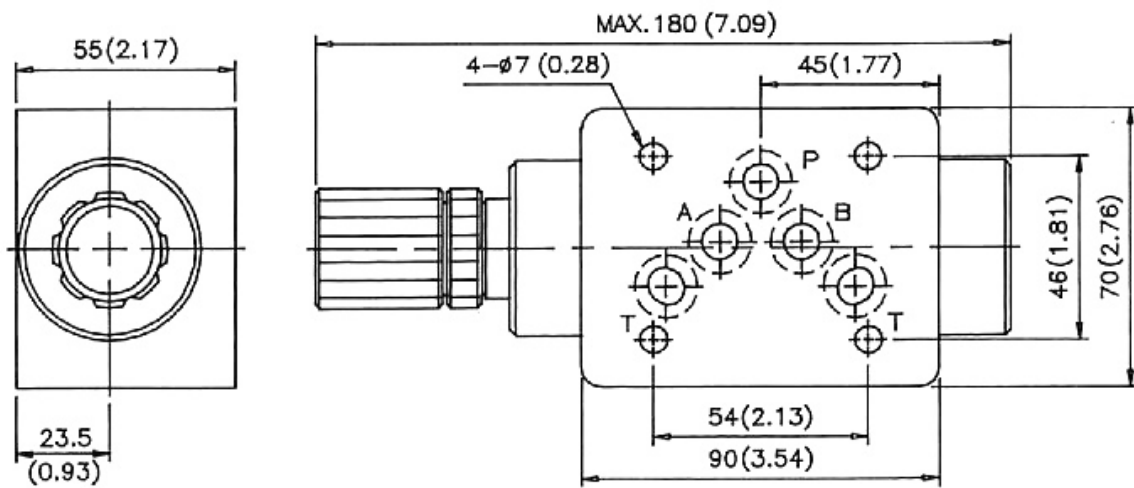


INSTALLATION DIMENSIONS

UNIT: mm (inch)

WEIGHT: 2.4 kgs(5.29lbs)

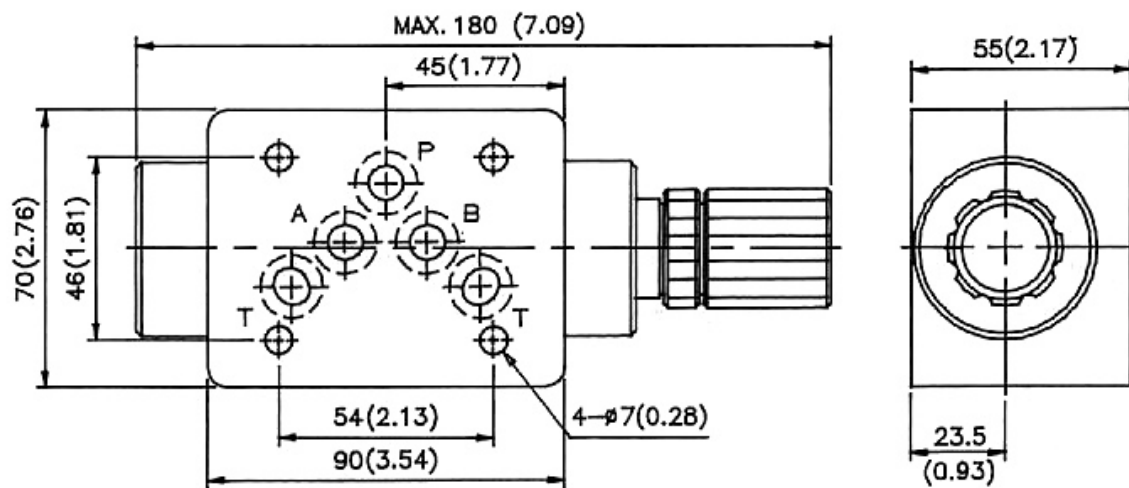
MT-03A - ※ - ※ - 30



INSTALLATION DIMENSIONS

UNIT: mm (inch)
WEIGHT : 2.4 kgs(5.29lbs)

MT - 03B - * - * - 30



MODULAR THROTTLE AND CHECK VALVE

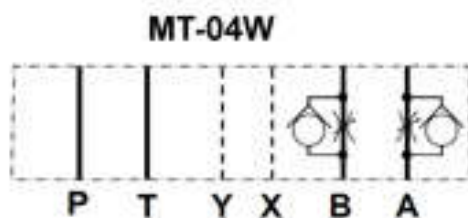
MT-04 SERIES

The modular adjustable flow control valve functions as a needle valve flow restrictor in one direction in a branch of a circuit, with free flow in the opposite direction. It operates on the A & B ports in the "meter-out" configuration. Adjustment is made with a calibrated knob, standard with the valve.

As a modular valve, this valve mounts between an NFPA D07 size directional control valve and the subplate. A longer than standard bolt kit is required when mounting modular valves in a stack.



Symbols



Model Code

MT - 04 W - K - **

1

2

3

4

5

1 **Series**

MT: Modular Throttle and
Check Valve (Flow Control)

4 **Adjustment Style**

K: Adjusting Knob

2 **Mounting Style**

04: NFPA Size D07

5 **Design Number**

3 **Function Port**

W: A & B Ports

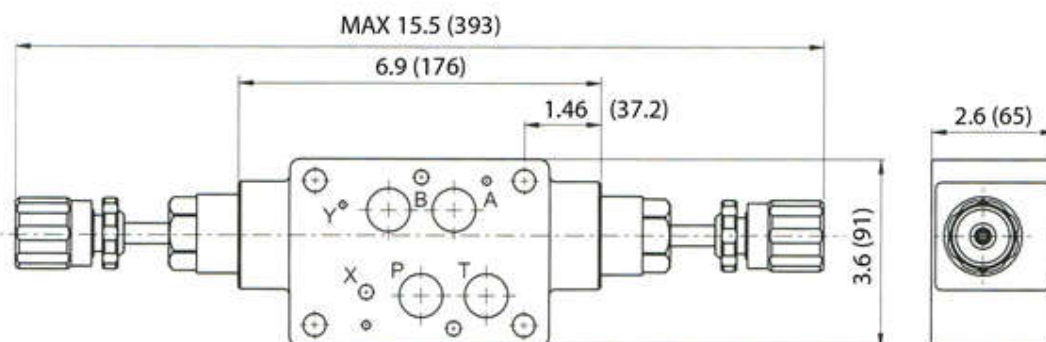
Features

Max. operating pressure	250 BAR (3675 PSI)
Max. flow capacity	190 LPM (50 GPM)

Dimensions

MT-04W

inch (mm)





Sede Mundial

The Oilgear Company

2300 South 51st Street Milwaukee, WI USA 53219
Tel: 414/327-1700 Fax: 414/327-0532

www.oilgear.com

Oilgear do Brasil Hidráulica Ltda.

Av. Ricardo Bassoli Cezare, 1009 Jd. das Bandeiras
13050-080 Campinas-SP Brasil
Tel/Fax: +55 19 3307-7866

www.oilgear.com.br

Para obter informações adicionais sobre seu aplicativo ou sobre os produtos referenciados neste manual, entre em contato com a Oilgear mais próxima. Acesse o website da Oilgear para obter uma relação completa de nossos endereços.