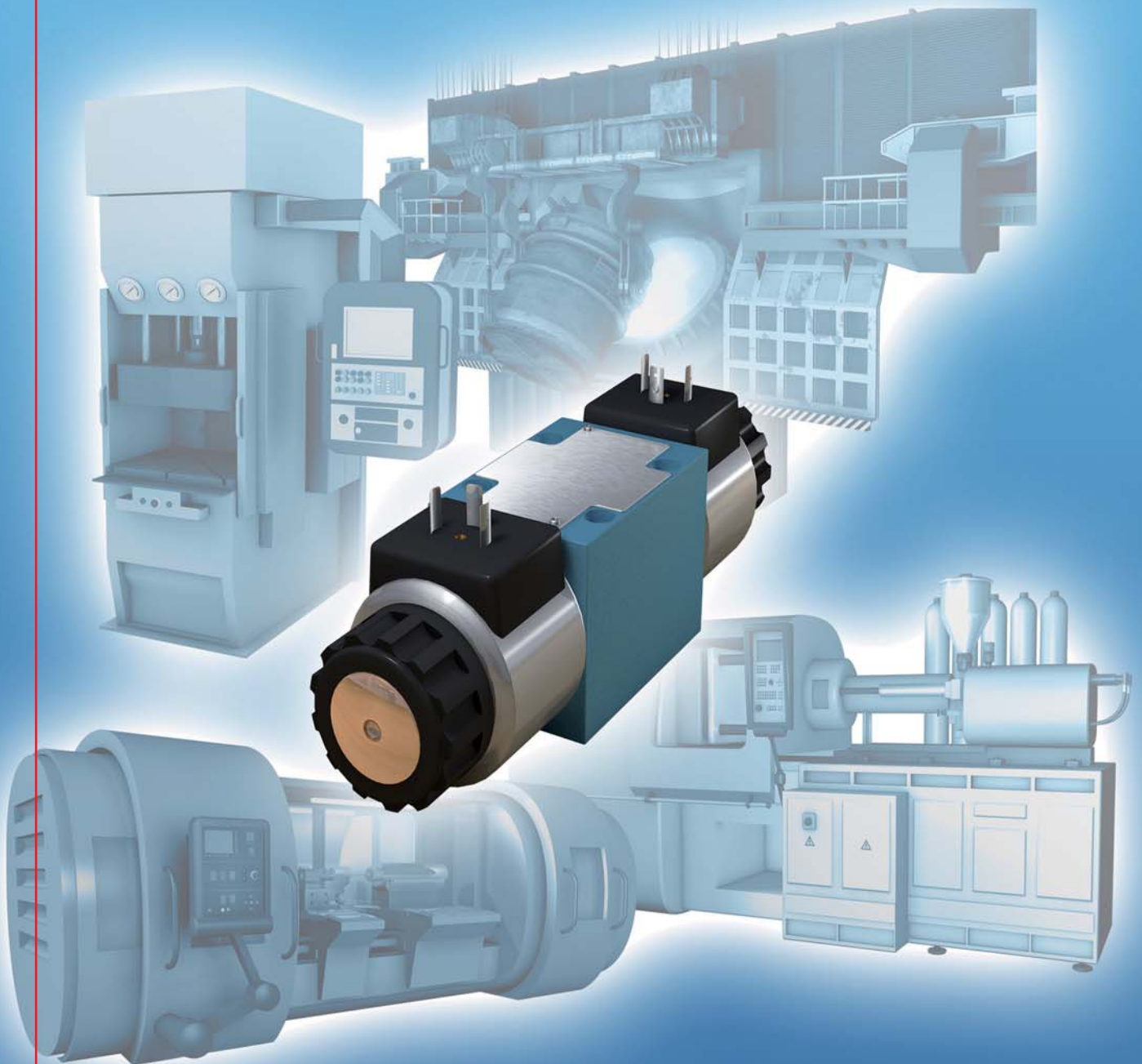


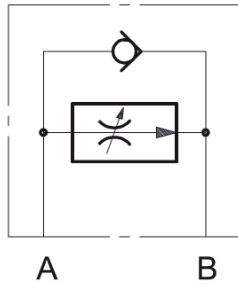
HYDAC

INTERNATIONAL

HYDAC Fluidtechnik: Industrial Valves

FLOW CONTROL VALVE COMPENSATED
PRESSURE VP-SR





up to 250 bar
up to 30 l/min

Flow control valve with integrated pressure compensator subplate VP-2SR6

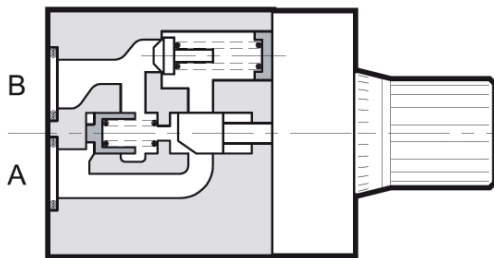
FEATURES

- Hole pattern to ISO 6263-03, Nominal size 6
- Adjustable flow control valve subplate mounting for flow control in one direction and full backflow in the opposite direction
- Independent from pressure by integrated pressure compensator
- Adjustable by turning knob

SPECIFICATIONS

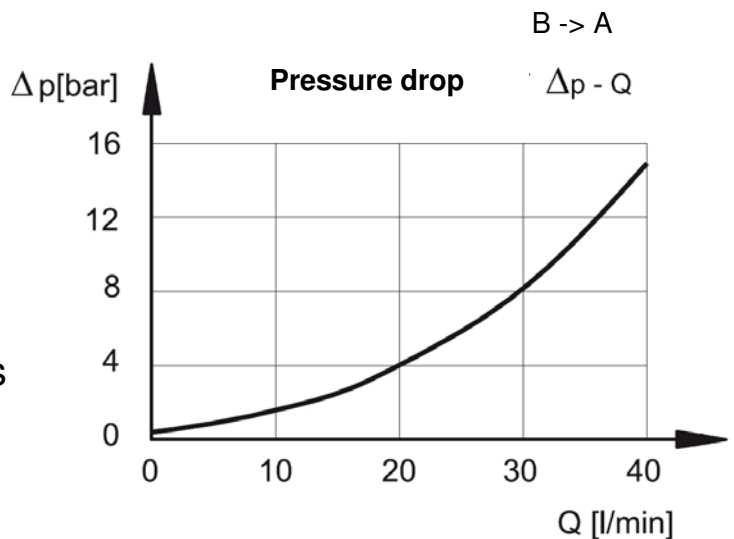
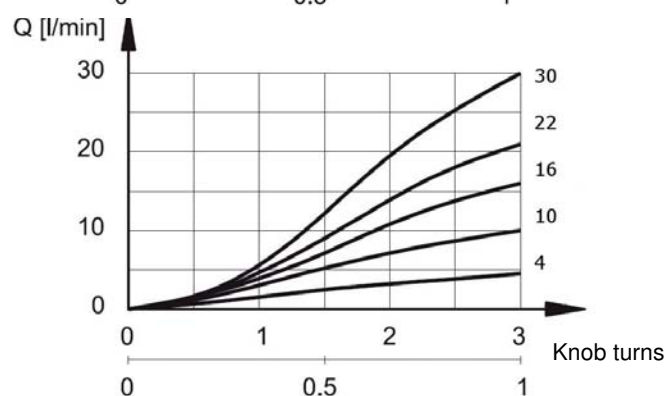
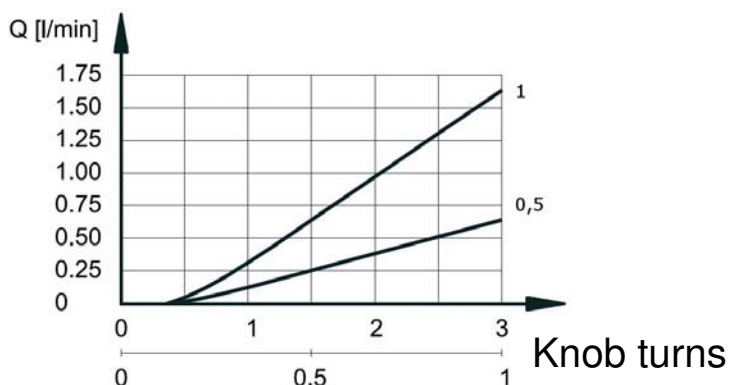
Operating pressure:	max. 250 bar
Minimal pressure difference:	max. 10 bar between A and B
Flow rate:	max. 0,5 / 1 / 4 / 10 / 16 / 22 / 30 l/min max. 40 l/min by the check valve (cracking pressure 0,5 bar)
Minimal adjustable Flow rate:	0,025 l/min
Operating fluid:	hydraulic oil to DIN 51524 part 1 and 2
Operating fluid temp. range:	-20 °C up to max. +80 °C
Ambient temperature range:	-20 °C up to max. +50 °C
Viscosity range:	7,4 – 400 mm ² /s is recommended
Filtration:	Class 20/18/15 according to ISO 4406
Weight:	1,3 kg

FUNCTION



flow control (measured at 36 mm²/s
and 50 °C)

DIAGRAMS



Standard models

VP-2SR6 D05SR-S01/N
 VP-2SR6 D1SR-S01/N
 VP-2SR6 D4SR-S01/N
 VP-2SR6 D10SR-S01/N
 VP-2SR6 D16SR-S01/N
 VP-2SR6 D22SR-S01/N
 VP-2SR6 D30SR-S01/N
 Other types on request

Part No.

3493359
 3493360
 3493361
 3493362
 3493363
 3493364
 3493365

MODEL CODE

VP-2SR6 D 05 S R S01 / V

Name and size
 2-way flow control valve nominal size 6

Curve
 D = degressive

Flow rate code
 05 = 0,5 l/min
 1 = 1 l/min
 4 = 4 l/min
 10 = 10 l/min
 16 = 16 l/min
 22 = 22 l/min
 30 = 30 l/min

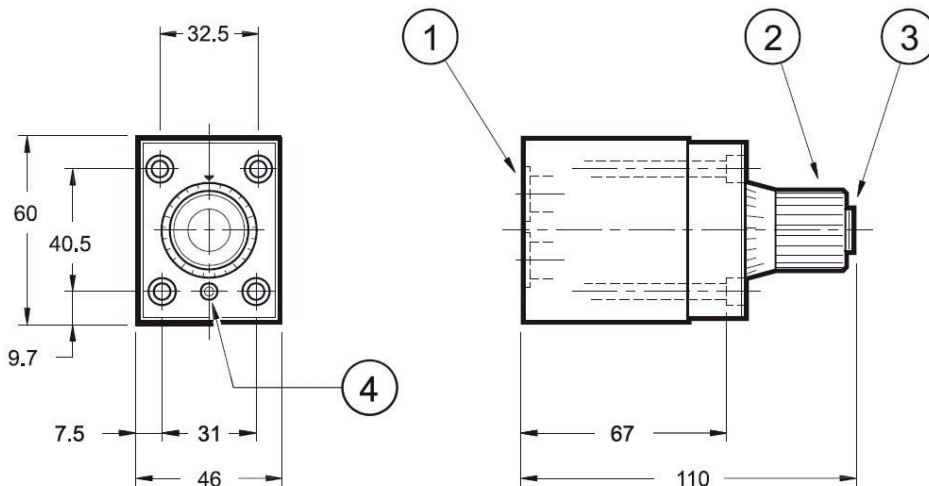
turning knob with scale

Check valve
 R (cracking pressure 0,5 bar)

Type
 S01 = Standard

Seal material
 V = Viton (Standard)
 N = NBR

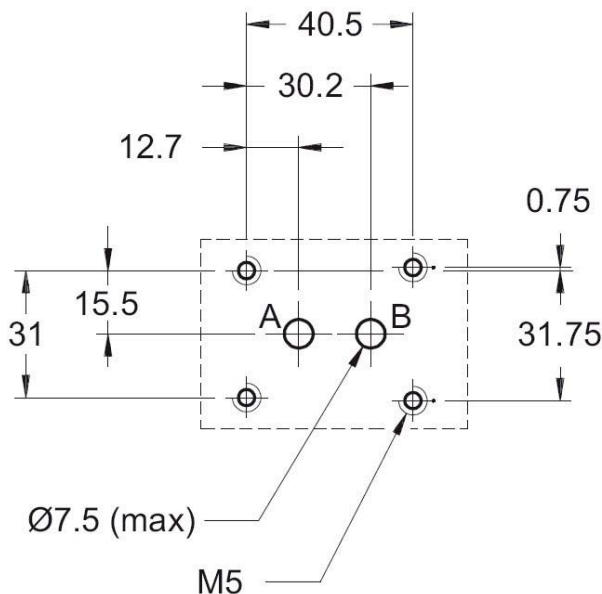
DIMENSIONS



- 1) Mounting plate with O-rings:
2x 14 x 2 NBR (Mat. 604072)
 - 2) Turning knob (3 turns) by
turning clockwise the flow is rising
 - 3) Regulation steps of the turning knob
 - 4) Fastening screw of the
turning knob
- Fastening screws: 4x
 Allen key M5x75
 Torque: 5 Nm + 0,5 Nm

All dimensions in mm.
 Fastening elements are not in the scope of
 delivery.

Mounting plate to ISO 6263-03-03-* -97



Annotation

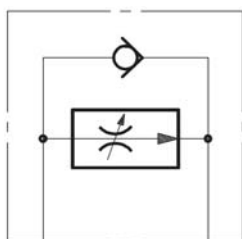
The information in this brochure
 relates to the operating conditions
 and applications described.
 For applications or operating
 conditions not described, please
 contact the relevant technical
 department.
 Subject to technical modifications.

Address: HYDAC Fluidtechnik
 Street Justus-von-Liebig-Str. 5
 City 66280 Sulzbach / Saar
 Tel. 06897 / 509 -0
 Fax 06897 / 509 -598
 Email flutec@hydac.com



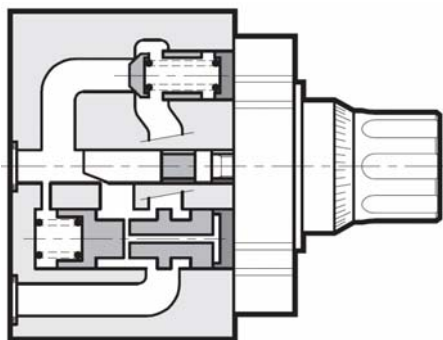
Flow Regulator pressure-compensated Subplate to ISO6263 VP-2SR10

SYMBOL



Up to 320 bar
Up to 70 l/min

FUNCTION



FEATURES

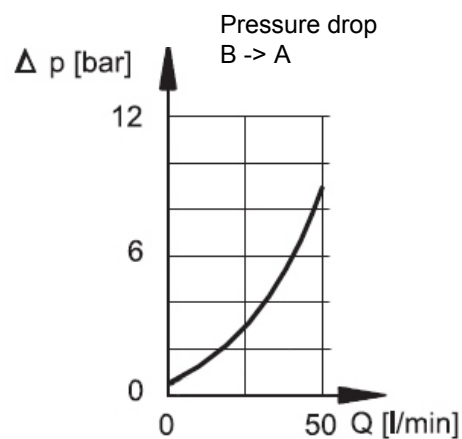
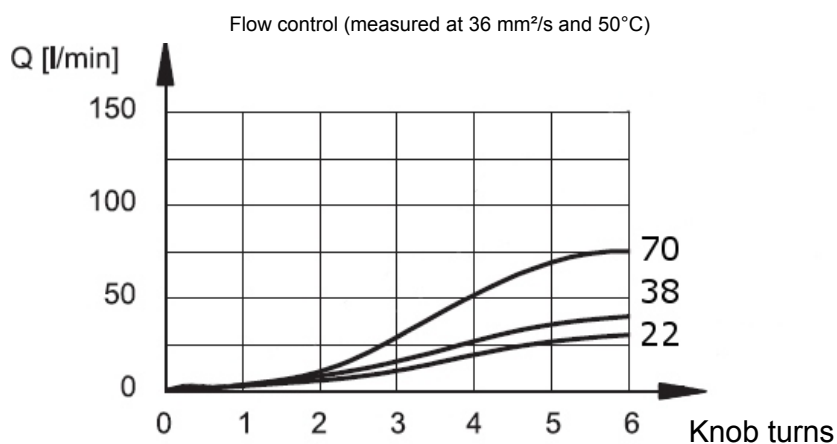
- Hole pattern to ISO 6263-06, Nominal size 10
- Adjustable flow control valve subplate mounting for flow control in one direction and full backflow in the opposite direction
- Independent from pressure by integrated pressure compensator
- Adjustable by turning knob

SPECIFICATIONS

Operating pressure:	max. 320 bar
Minimal pressure difference:	max. 10 bar between A and B
Flow rate:	max. /22 /38 / 70 l/min
Minimal adjustable Flow rate:	0,05 l/min
Operating fluid:	hydraulic oil to DIN 51524 part 1 and 2
Operating fluid temp. range:	-20°C up to max. +80°C
Ambient temperature range:	-20°C up to max. +50°C
Viscosity range:	10 – 400 mm ² /s is recommended
Filtration:	Class 20/18/15 according to ISO 4406 or cleaner
Weight:	3,6 kg
Cracking pressure of check:	0,5 bar

PERFORMANCE

measured at $v = 36 \text{ mm}^2/\text{s}$ and $T_{\text{oil}} = 50^\circ \text{C}$

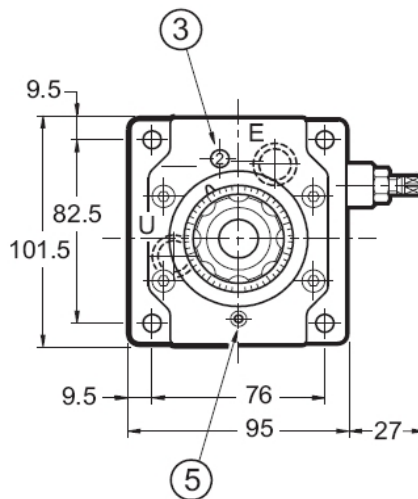
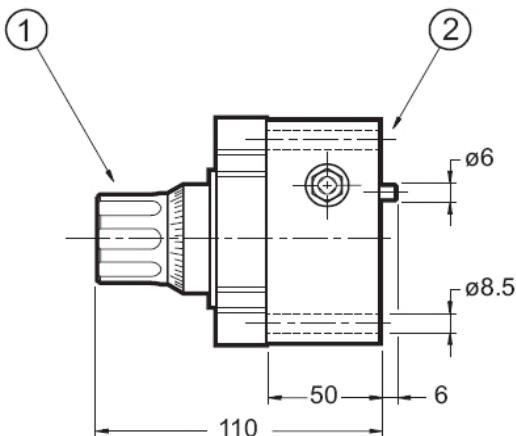


Standard models	Part No.
VP-2SR10 D22SR S01/V	3541177
VP-2SR10 D38SR S01/V	3541179
VP-2SR10 D70SR S01/V	3541182
Other models on request	

MODEL CODE

	VP-2SR10	D 22	S R	S01 / V
Name and size	2-way flow control valve nominal size 10			
Curve	D = degressive			
Flow rate code	22 = 22 l/min 30 = 30 l/min 70 = 70 l/min			
Turning knob with scale				
Check valve	R (cracking pressure 0,5 bar)			
Type	S01 = Standard			
Seal material	V = FKM (Standard) N = NBR			

DIMENSIONS

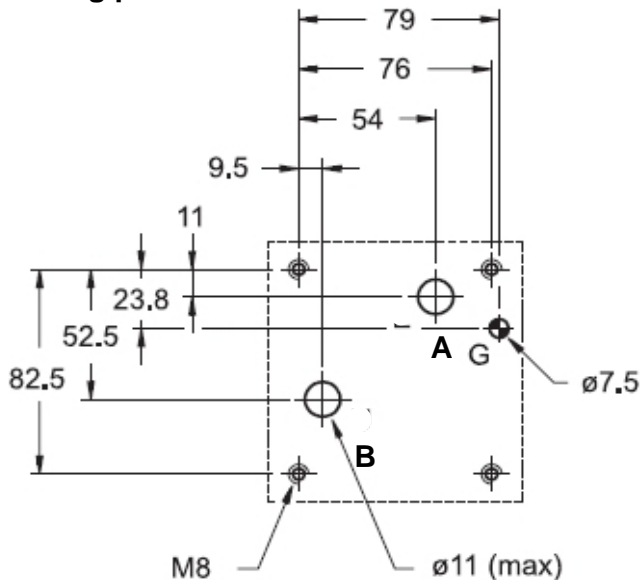


Turning knob (6 turns) by turning clockwise the flow is rising
Mounting plate with O-rings:
2x 15,06 x 2,62 FKM
Display
Fastening screw of the turning knob

fastening screws:
allen key M8x60 10.9
torque: 20 Nm + 2 Nm

All dimensions in mm.
Fastening elements are not in the scope of delivery.

Mounting plate to ISO 6263-06-05-*-97



Annotation
The technical information in this brochure are relating to the operating conditions and applications.
At deviant applications and/or operating conditions please contact the technical dept.
Technical information are subject to technical modifications.

HYDAC Fluidtechnik GmbH
Justus-von-Liebig-Str. 5
66280 Sulzbach / Saar
Tel.: 06897 / 509 -0
Fax: 06897 / 509 -598
Email: flutec@hydac.com