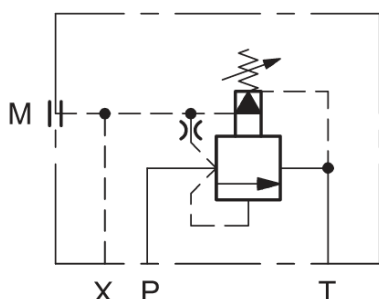




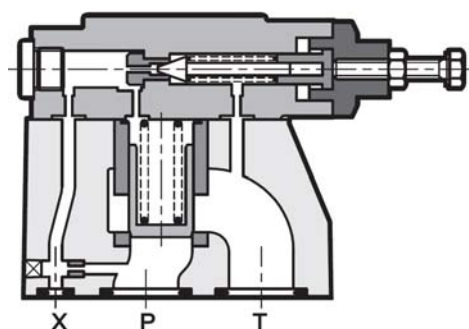
## Pressure Relief Valve pilot operated Subplate to ISO 6264 VP-DBP10

### SYMBOL



up to 350 bar  
up to 400 l/min

### FUNCTION



### FEATURES

- Hole pattern to ISO 6264-08, Nominal size 10
- low flow loss by maximum size bore holes
- Remote control over port X possible

### SPECIFICATIONS

Operating pressure:	max. 350 bar
Flow rate:	max. 400 l/min
Operating fluid:	hydraulic oil to DIN 51524 part 1 and 2
Operating fluid temperature range:	-20°C up to max. +80°C
Ambient temperature range:	-20°C up to max. +50°C
Viscosity range:	7,4 – 400 mm <sup>2</sup> /s is recommended
Filtration:	Class 20/18/15 according to ISO 4406
Installation:	no orientation restriction
Hole pattern:	ISO 6264-08
Weight:	4,3 kg

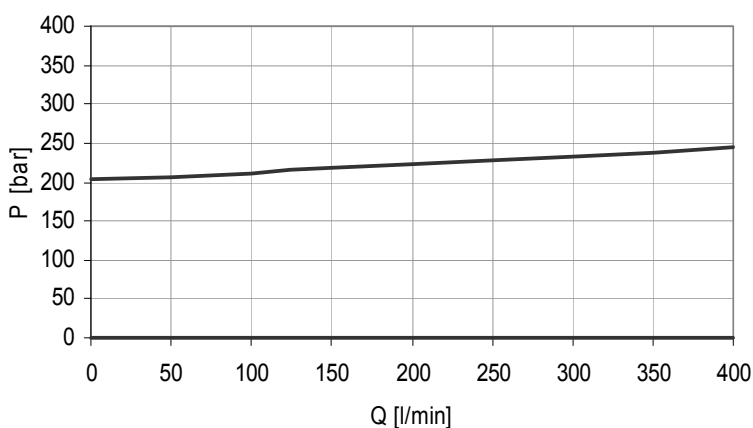
### FUNCTION

The pilot-operated pressure relief valve VP-DBP10 in subplate design has a pilot and a main stage – both are poppet-type. Its function is to limit the pressure in the system. When the hydraulic force at port P exceeds the pre-set spring tension of the pilot stage, the poppet opens and oil flows from the rear side to the tank port. Due to the resulting pressure imbalance, the main piston moves against the return spring and lets oil from port P to T. This continues until the system pressure is equal to the spring pressure and the valve closes again. Attention: pressures at port T are increasing the opening pressure!

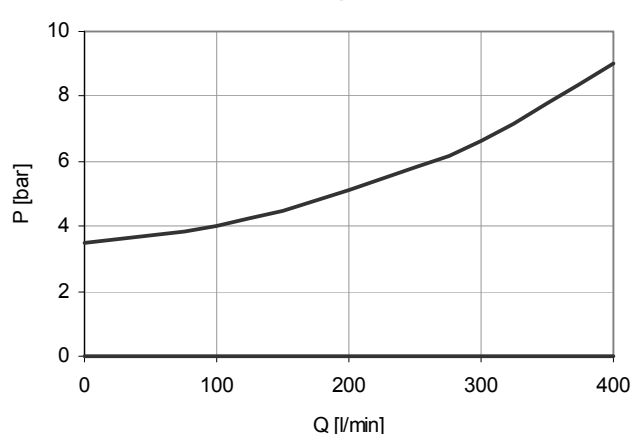
### PERFORMANCE

measured at  $v = 36 \text{ mm}^2/\text{s}$  and  $T_{\text{oil}} = 50^\circ \text{C}$

p-Q Curve



Pressure differential  $\Delta p/Q$



Standard models	Part No.
VP-DBP10 070V S01/V	3541089
VP-DBP10 210V S01/V	3541090
VP-DBP10 350V S01/V	3541091
Other models on request	

## MODEL CODE

VP-DBP10 070V S01 /V

**Name and size** \_\_\_\_\_  
Pressure relief valve pilot operated NW 10

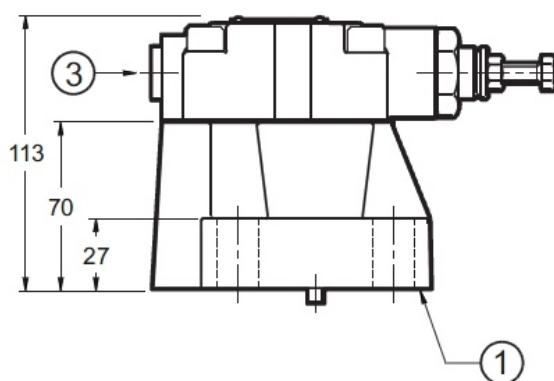
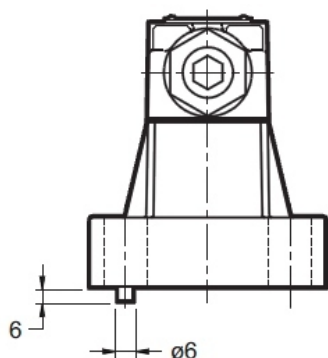
**Pressure ranges** \_\_\_\_\_  
070 = up to 70 bar  
210 = up to 210 bar  
350 = up to 350 bar

**Adjustability** \_\_\_\_\_  
V = adjustable with tool

**Type** \_\_\_\_\_  
S01 = Standard

**Seal material** \_\_\_\_\_  
V = FKM (Standard)  
N = NBR

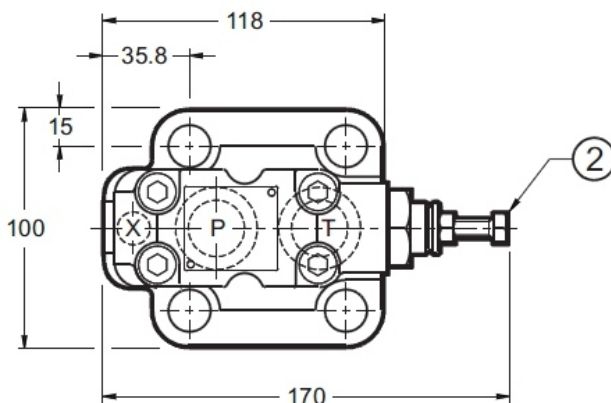
## DIMENSIONS



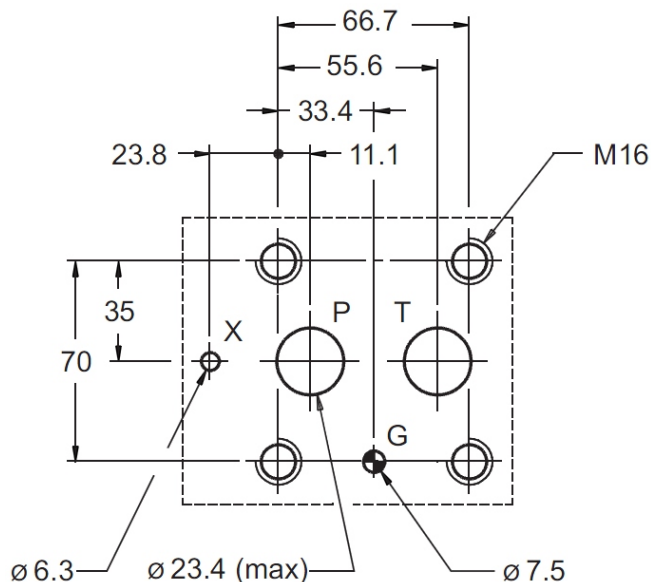
- 1) Mounting plate with O-rings:  
2x O-Ring 29,82 x 2.62 90 Shore FKM  
1x O-Ring 9,13 x 2.62 90 Shore FKM
- 2) Allen screw: size 13  
by turning clockwise the pressure is rising
- 3) Port for measuring gauge Y 3/8" BSP

Fastening screws: 4x Allen key M16x50 10.9, ISO4762  
Torque: 170 Nm + 5 Nm

All dimensions in mm.  
Fastening elements are not in scope of delivery.



## Mounting plate to ISO 6264-08-13-\*-97



**Annotation**  
The technical information in this brochure are relating to the operating conditions and applications.  
At deviant applications and/or operating conditions please contact the technical dept.  
Technical information are subject to technical modifications.

HYDAC Fluidtechnik GmbH  
Justus-von-Liebig-Str. 5  
66280 Sulzbach / Saar  
Tel.: 06897 / 509 -0  
Fax: 06897 / 509 -598  
Email: flutec@hydac.com