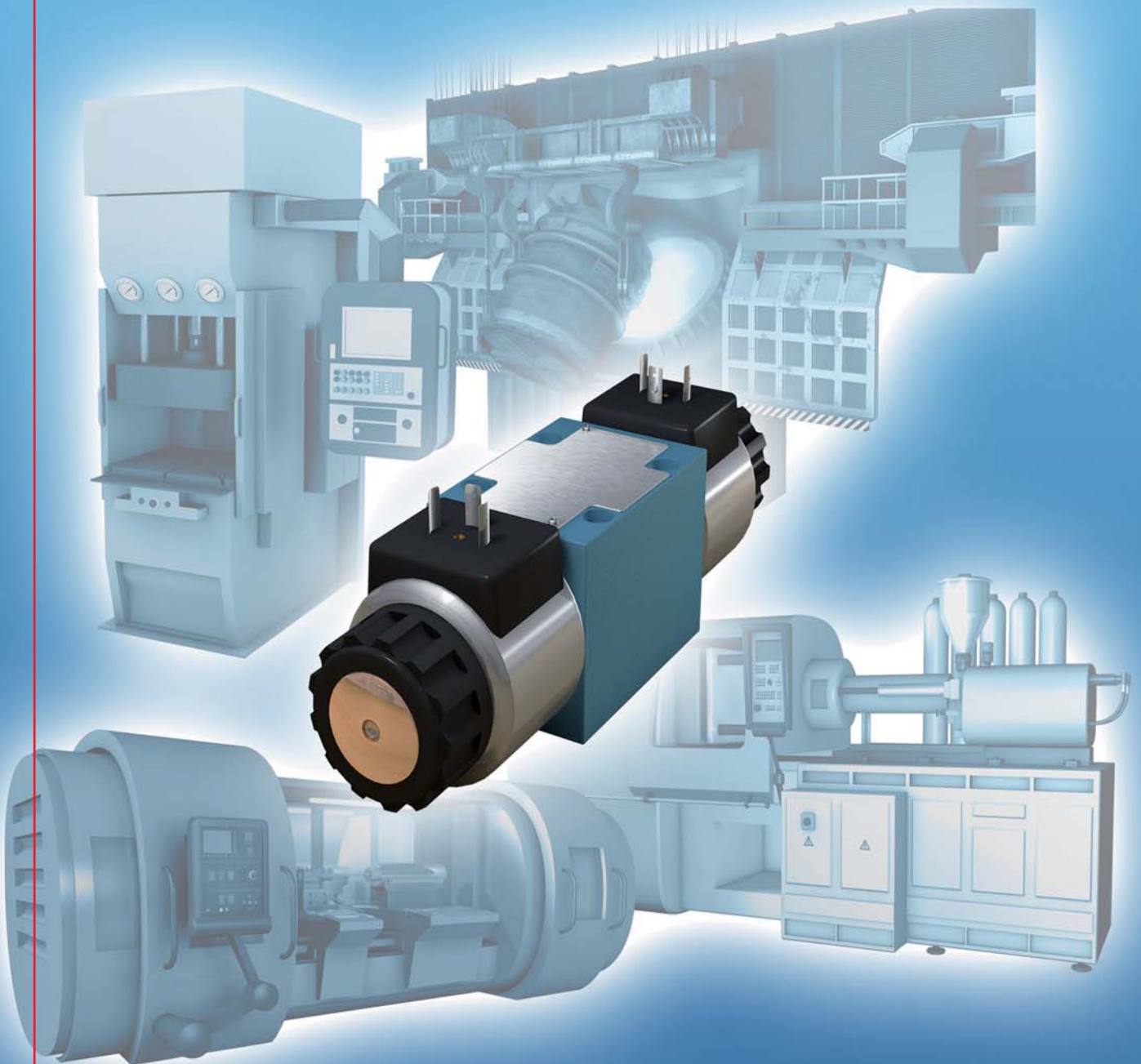


HYDAC Fluidtechnik: Industrial Valves

Pressure Reducing Valve ZW DM - Modular

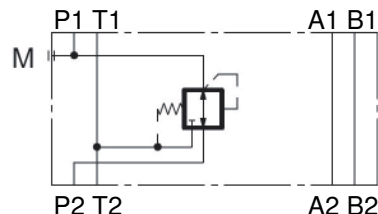




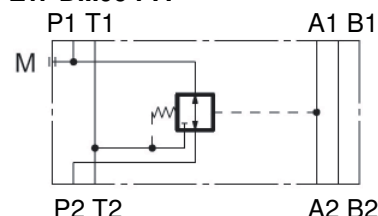
P_{max} = 350 bar
Q_{max} = 50 l/min

Symbols

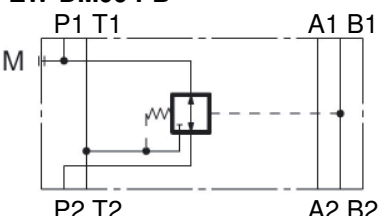
ZW-DM06 PT



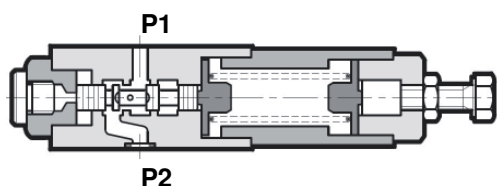
ZW-DM06 PA



ZW-DM06 PB



Function



Direct acting pressure reducing valve as sandwich plate housing ZW-DM06

Features

- Hole pattern according to DIN 24340 Form A6, ISO 4401-03, nominal size 06
- Pressure reducing valve as sandwich plate housing, normally open, with pressure reducing function to the consumer
- easy to assemble under body mounted spool valves according to DIN 24340 Form A6, ISO 4401 (use longer screws)
- type according to ISO 7790
- adjustable by tool

Types

- type PT: Pressure regulation in line P
- type PA: Pressure regulation in line A (Highest pressure in line B)
- type PB: Pressure regulation in line B (Highest pressure in line A)

Specifications

Operating pressure:

max. 350 bar

Pressure ranges:

3 – 35 bar, 10 – 70 bar

30 – 140 bar, 60 – 280 bar

Nominal flow:

max. 50 l/min (in controlled lines)

max. 75 l/min (in free lines)

Fluids:

hydraulic oil according to DIN 51524 Part 1 / 2

Media operating temp. range:

-20°C up to max. +80°C

Ambient temperature range:

-20°C up to max. +50°C

Viscosity range:

10 – 400 mm²/s is recommended

Filtration:

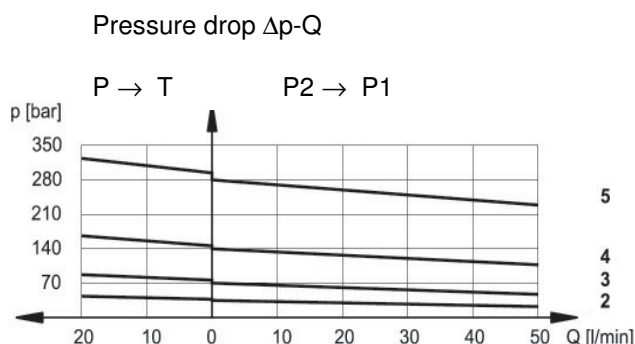
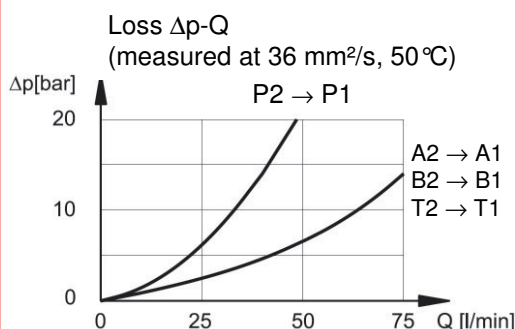
Class 20/18/15 to ISO 4406 or cleaner

Weight:

1,4 kg incl. valve

Curves

measured at t = 50°C, ν = 32mm²/s



Standard models

ZW-DM06-01-PT 280V- V	6074683
ZW-DM06-01-PA 280V- V	6074686
ZW-DM06-01-PB 280V- V	6074689
Other types on request	

Part No.

Model code

Sandwich plate type

Name and nominal size

Pressure reducing valve

Series

01 = Standard

Types

PT = Pressure regulation in line P

PA = Pressure regulation in line A

PB = Pressure regulation in line B

Pressure ranges

35 = 35 bar

70 = 70 bar

140 = 140 bar

280 = 280 bar

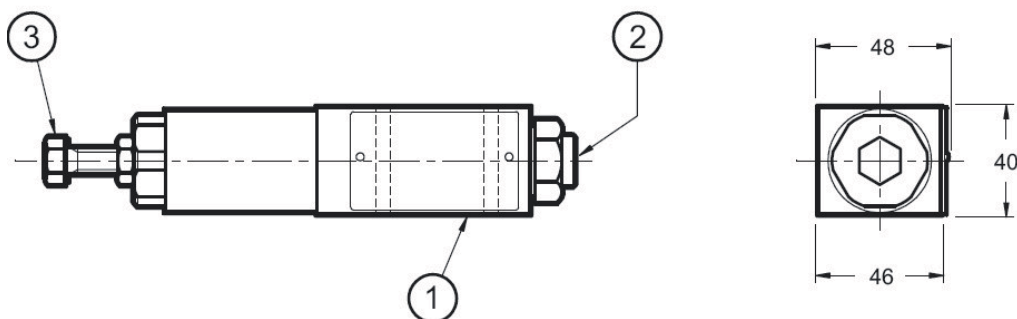
Seals

V = Viton (Standard)

N = NBR

ZW - DM06 - 01 - PT - 280 - V

Dimensions



1 – O-Ring 9,25 x 1,78-90Sh (4 pcs.)

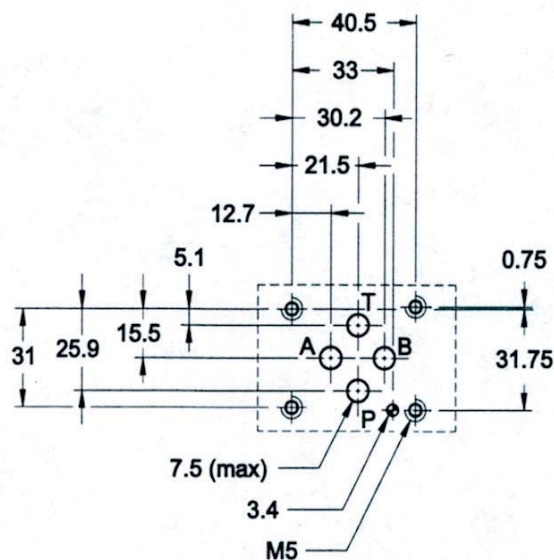
2 – Port for pressure gauge 1/4" BSP

3 – Fixing screw, hex size 17

All dimensions in mm.

Fixing elements are not in scope of delivery.

Mounting plate according to ISO 4401-03



Annotation

The information in this brochure relates to the operating conditions and applications described. For applications or operating conditions not described, please contact the relevant technical department. Subject to technical modifications.

Address: HYDAC Fluidtechnik

Street Justus-von-Liebig-Str. 5

City 66280 Sulzbach / Saar

Tel. 06897 / 509 -0

Fax 06897 / 509 -598

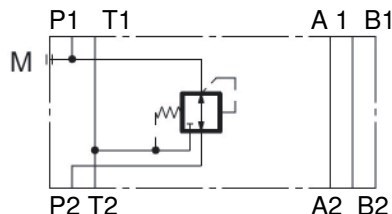
Email flutec@hydac.com

Direct acting pressure reducing valve as sandwich plate housing ZW-DM10

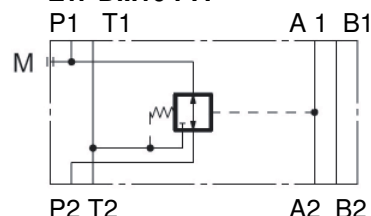
up to 320 bar
up to 100 l/min

Symbols

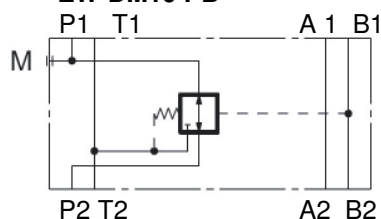
ZW-DM10 PT



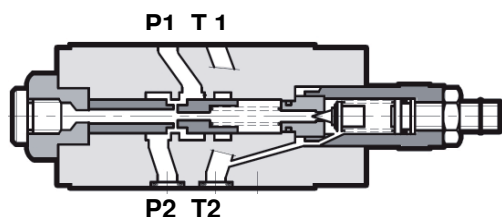
ZW-DM10 PA



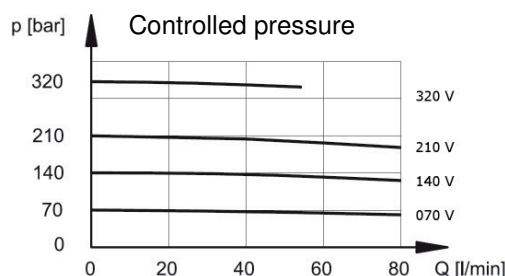
ZW-DM10 PB



Function



P-Q Diagram



Prospekt Nr. 5.199.5.0 /09.09

Features

- Hole pattern to DIN 24340 Form A10, ISO 4401-05, nominal size 10
- pressure reducing valve as sandwich plate housing, normal open, with pressure reducing function to the consumer
- easy to assemble under body mounted spool valves to DIN 24340 Form A10, to ISO 4401-05 (use longer screws)
- adjustable by tool

types

- type PT: Pressure reducing in line P
- type PA: Pressure reducing in line A (Highest pressure in line B)
- type PB: Pressure reducing in line B (Highest pressure in line A)

Specifications

Nominal pressure:

max. 320 bar

Pressure ranges:

5 – 70 bar, 8 – 140 bar,

10 – 210 bar, 15 – 320 bar

Nominal flow:

max. 80 l/min (in controlled lines)

max. 100 l/min (in free lines)

Fluids:

Hydraulic fluid to DIN 51524 part 1 and 2

Media operating temp. range:

-20°C up to max. +80°C

Ambient temperature range:

-20°C up to max. +50°C

Viscosity range:

10 – 400 mm²/s is recommended

Filtration:

Class 20/18/15 to ISO 4406
or cleaner

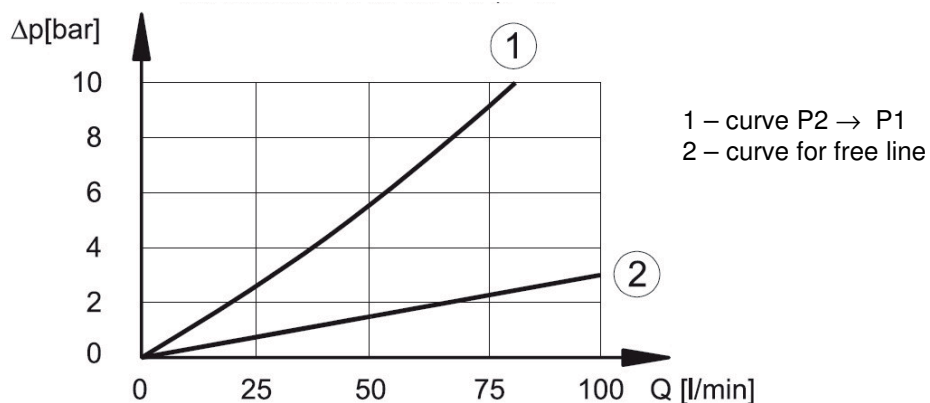
Weight:

2,7 kg incl. valve

Diagrams

measured at $t = 50^\circ\text{C}$, $\nu = 32\text{mm}^2/\text{s}$

Pressure drop Δp -Q



Standard models type Mat-Nr.

ZW-DM10-01-PT 070V-N 3492610
 ZW-DM10-01-PT 140V-N 3492611
 ZW-DM10-01-PT 210V-N 3492612
 ZW-DM10-01-PT 320V-N 3492613

ZW-DM10-01-PA 070V-N 3492614
 ZW-DM10-01-PA 140V-N 3492626
 ZW-DM10-01-PA 210V-N 3492627
 ZW-DM10-01-PA 320V-N 3492628

ZW-DM10-01-PB 070V-N 3492630
 ZW-DM10-01-PB 140V-N 3492632
 ZW-DM10-01-PB 210V-N 3492633
 ZW-DM10-01-PB 320V-N 3492634

other types on request

Type code

Sandwich plate type

Name and nominal size
 Pressure reducing valve

Series

01 = Standard

Type

PT = Pressure reducing in line P

PA = Pressure reducing in line A

PB = Pressure reducing in line B

Pressure ranges

70 = 5 - 70 bar

140 = 8 - 140 bar

210 = 10 - 210 bar

320 = 15 - 320 bar

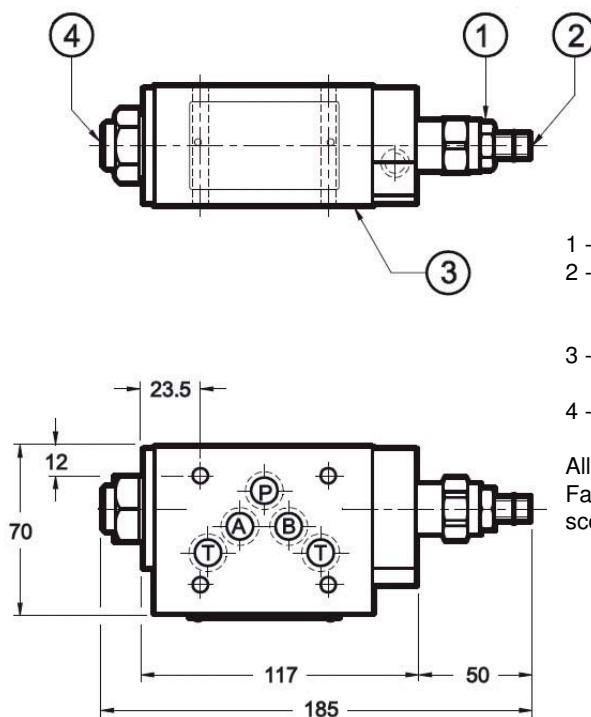
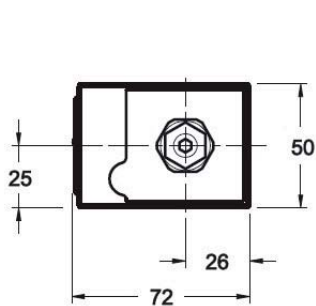
Seal material

V = Viton (Standard)

N = NBR

ZW - DM10 - 01 - PT - 070V - V

Dimensions

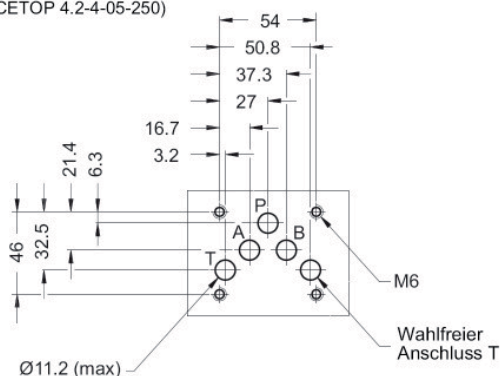


- 1 - Fastening nut hex size 17
- 2 - Allen tool size 5
By Turning clockwise the flow is rising.
- 3 - Mounting plate with seal ring:
12.42 x 1.78 NBR
- 4 - Pressure gauge connection 1/4" BSP.

All dimensions in mm.
 Fastening elements are not in the scope of supply.

Mounting plate to ISO 4401-05

ISO 4401-05-04-0-94
 (CETOP 4.2-4-05-250)



Annotation

The information in this brochure relates to the operating conditions and applications described. For applications or operating conditions not described, please contact the relevant technical department. Subject to technical modifications.

Address: HYDAC Fluidtechnik
 Street Justus-von-Liebig-Str. 5
 City 66280 Sulzbach / Saar
 Tel. 06897 / 509 -0
 Fax 06897 / 509 -598
 Email flutec@hydac.com